

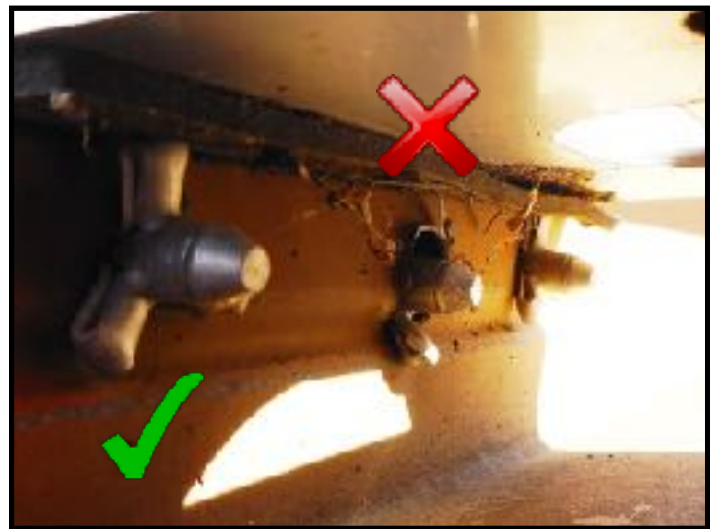
Inspection Bulletin

In order to assist users to understand whether the safety systems used on their buildings are correctly installed and safe for use, this series of bulletins provides general advice and examples of typical installation issues.

Product Type	Surface-Mounted Roof Anchor
Fixings	Bulb-Type rivets



Surface mounted anchor



Underside view of anchor

Explanation

On the surface, the anchor shown on the left appears to pass visual inspection. When the underside of the anchor is inspected however, it is clear that the bulb-type rivets used on this anchor have not correctly formed in all circumstances. This means that the anchor may not act as designed under a full fall arrest load.

This example illustrates the importance of regular annual inspections to ensure that the safety systems workers at height are entrusting themselves on, are safe for use.

Action

If you find an anchor that shows this defect, immediately tag it out of service. An accredited installer can then assist by assessing the product for repair or replacement.

Re-certification of Systems

Annual re-certification of height safety anchors and lifeline systems by the manufacturer accredited representative is highly recommended. Contact the manufacturer to identify a suitable installer/inspector to complete this task. Alternatively contact WAHA to refer your enquiry.